

# Owner Applied Number

## Marking your equipment

### Why mark equipment?

Marking leads to recovery of stolen property.

Due to the widespread concern for the increase in the number of thefts in the rural communities, the Owner Applied Number (O.A.N) crime prevention program has been initiated in our state for the identification of farm machinery, equipment and even household goods.



O.A.N. is a program supported by numerous organizations and agencies including: the [California Rural Crime Prevention Task Force](#), the [California Highway Patrol](#), [California Farm Bureau Federation](#), [United Agri-Business League](#) and [California State Grange](#).

This [FBI](#) established system allows state and county to be assigned a number which is recorded in the NCIC (National Crime Information Center). A directory containing these numbers is available to each law enforcement agency for use in identifying the various state and counties.

For more information on OAN visit the [Tulare County DA's Office](#).

### Where should I mark my equipment?

It has been proven that thieves are hesitant to take items that can be readily identified. Placing signs, decals, and other visible information warning potential thieves that this equipment has been marked and registered with the local law enforcement officials may help to prevent a possible theft.

One of the key elements in marking equipment is uniformity. Locate the mark on the right side of the equipment as you are standing behind it.

On all equipment with non-removable tongues; manure spreaders, grain drills, auger wagons, etc., place ID number on right side on top of tongue, 12" to rear of hitch pin.

On 3 point equipment with tool bar, place ID number on top of tool bar adjacent to right hitch pin.

We recommend that you also mark your equipment in another location known only to you. If ID numbers are removed or destroyed, property can still be positively identified by the numbers on other locations.

**Note:** We suggest that the seller of equipment notify the new owner that the equipment has been marked. The new owner should then locate his number below the previous owner's number, so that the equipment can be traced from one owner to another. **Do not alter or deface the previous owner's number.**

## Marking Tool Suppliers

### Pipe Roller, stamps, ink, etc

Pannier Corporation  
207 Sandusky Street  
Pittsburgh, PA 15212  
(412) 323 4900  
[www.pannier.com](http://www.pannier.com)



*Pipe roller*

### Tire Brander

Myers Tire Supply  
7305 Edgewater Dr. Unit F  
Oakland, CA 94621  
(510) 632-3404 or (800) 292-4687  
[www.myerstiresupply.com](http://www.myerstiresupply.com)



*Tire brander*

### Farm/Ranch Watch Sign

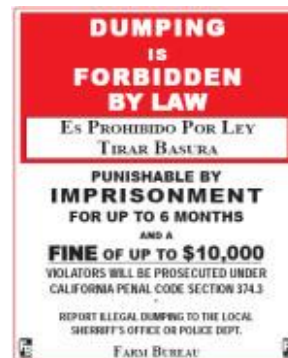
Inventory item  
Please contact CFBF member help desk  
at 1-800-698-3276 or your local county Farm  
Bureau office.



*Farm/Ranch Watch Sign*

### Illegal Dumping Sign

Inventory item  
Please contact CFBF member help desk  
at 1-800-698-3276 or your local county Farm  
Bureau office.



*Illegal Dumping Sign*

### Livestock Ear Tattoo Kit

Walco International  
1917 Foundry Ct.  
Ceres, CA 95307  
(209) 538-2750  
[www.walcointl.com](http://www.walcointl.com)



*Livestock ear tattoo kit*